

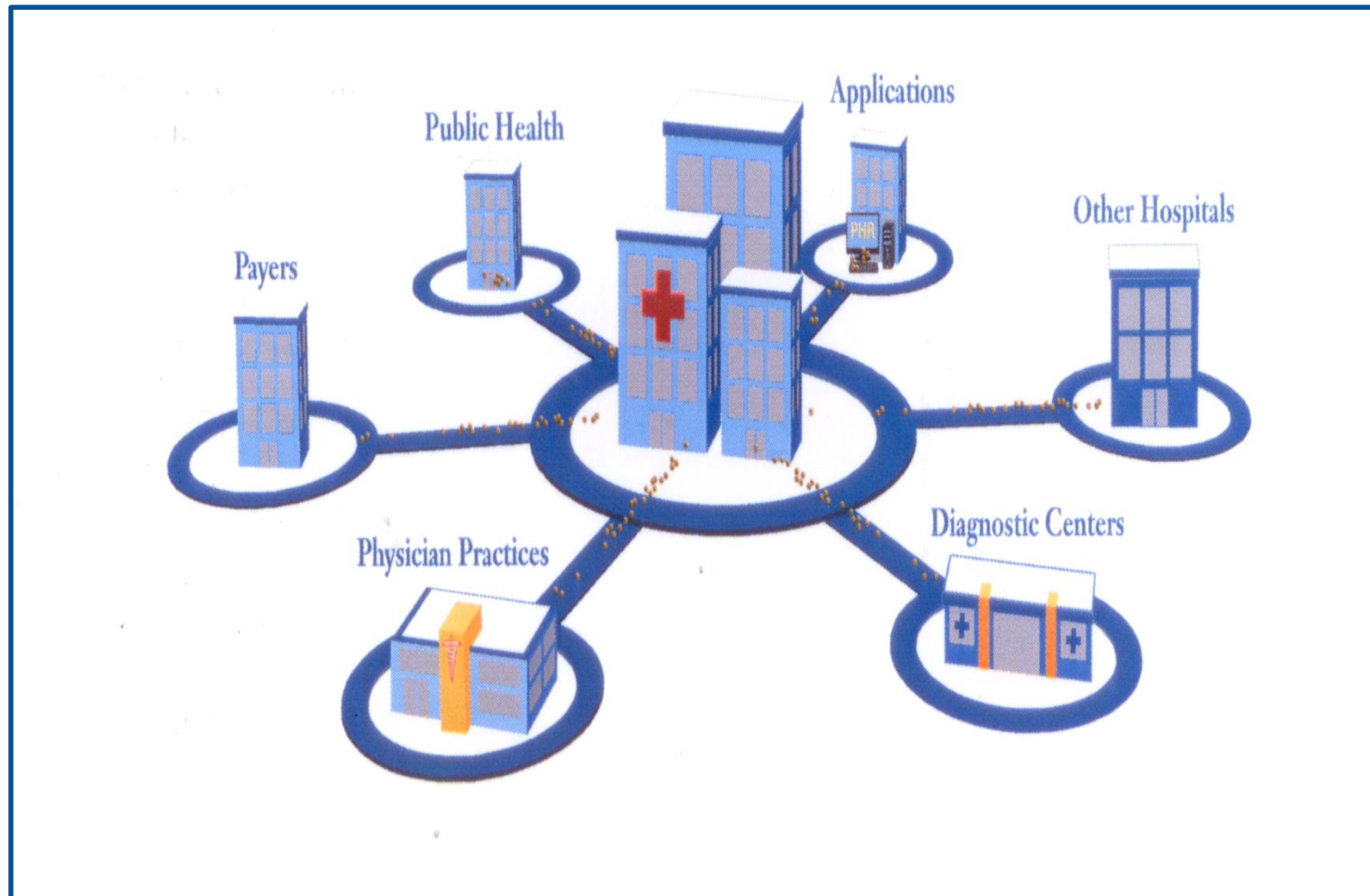


# **Improved healthcare services by efficient information exchange in the INSEED Project**

**Acad. Ioanel Sinescu**

“Carol Davila” Medical University, Bucharest

# Health system

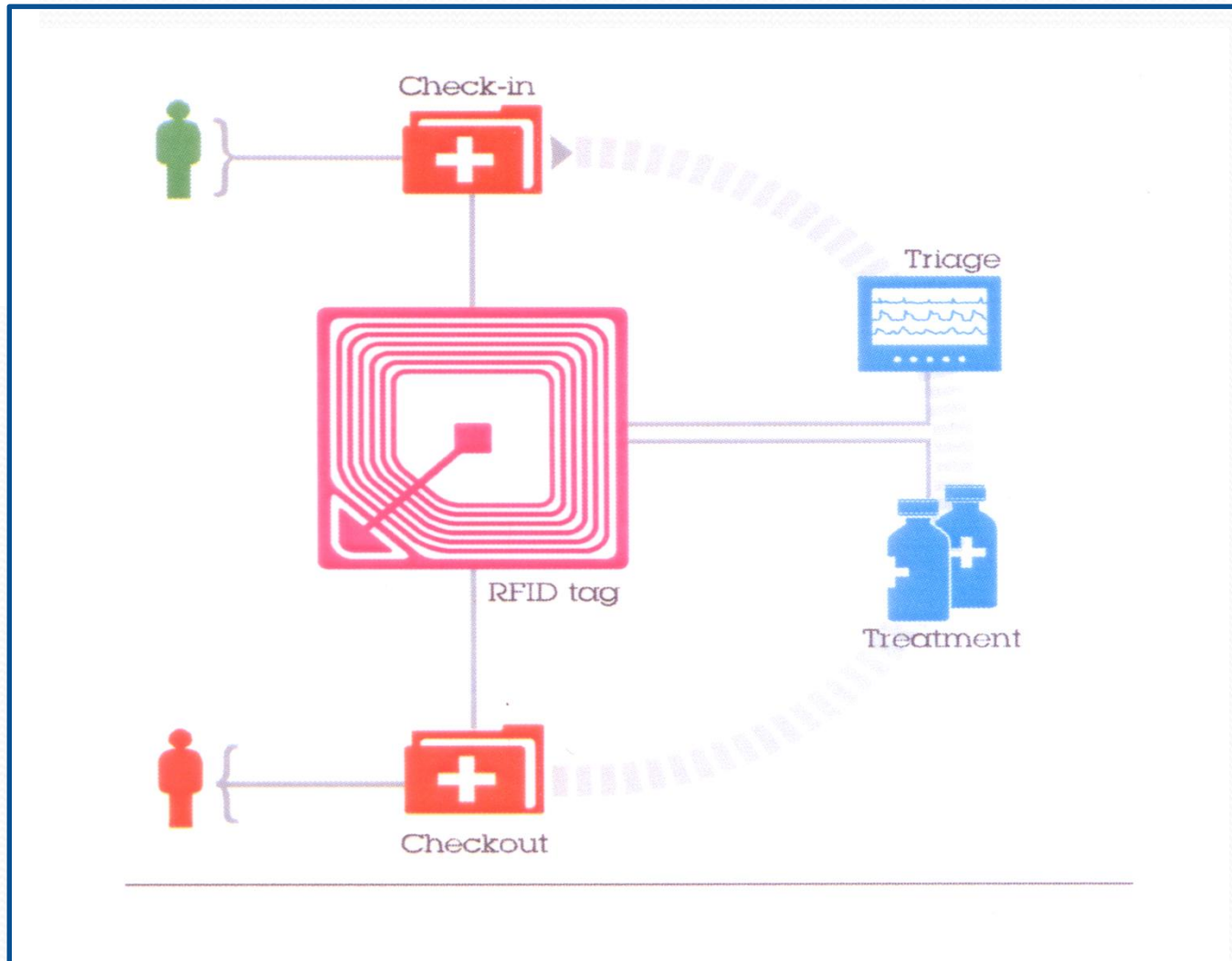


# The Impact of Health Information Services and Systems in the Romanian N.H.S.

- Wards
- Out patient clinic
- Laboratories
- Pharmacy
- Operating theatres
- I.C.U
- 24 h duties
- Economic Department
- Human resources
- Statistics



# Greater efficiency



# Information Services in Healthcare

Hospital → University clinic → Research

## 1. Monitoring the movement of the patients + costs:

- out patient
- admittance in the hospital
- medical analysis
- medical consulting
- surgical operations
- I.C.U
- treatments; recoveries

## 2. Investigations: Echo

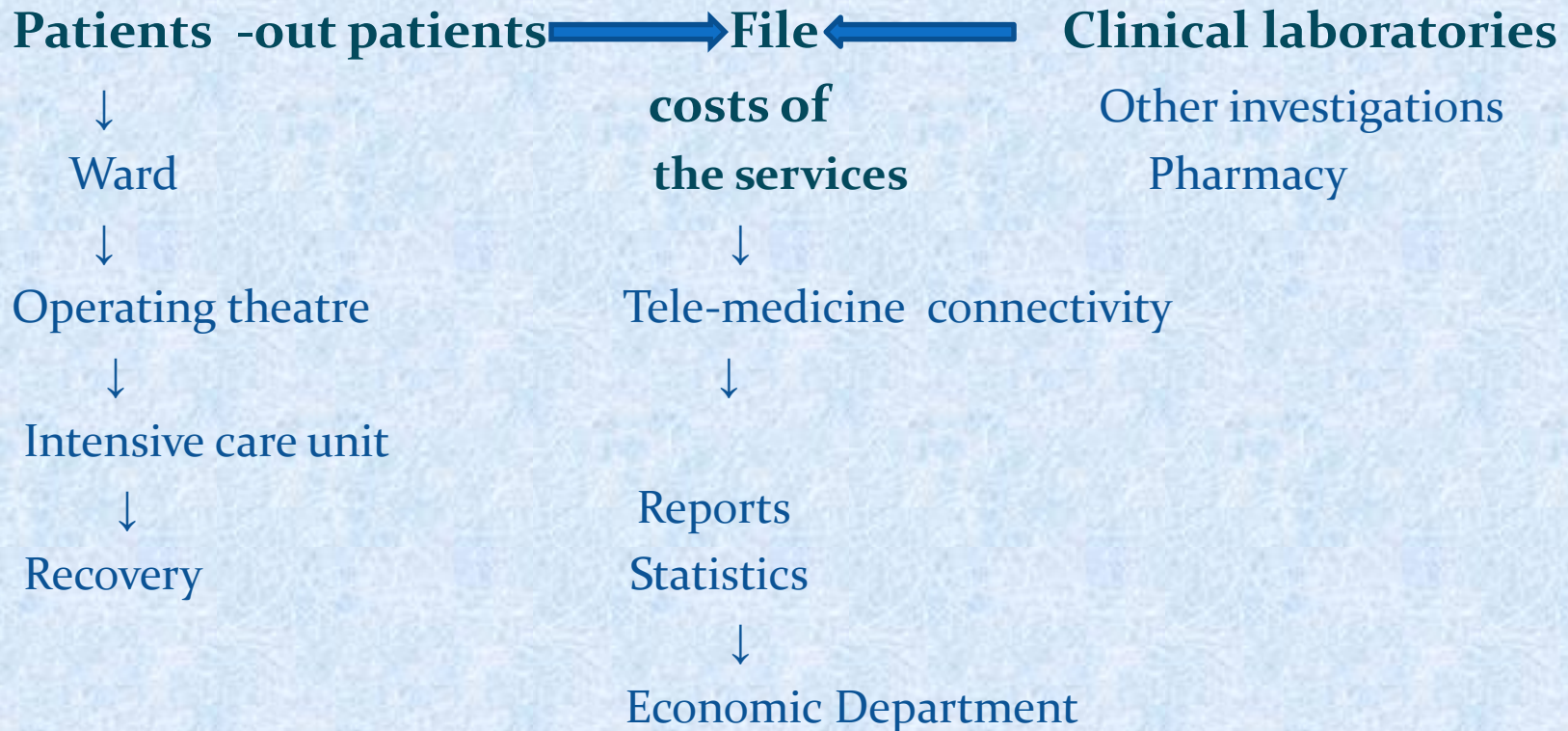
Rx  
Endoscopies  
EKG  
EEG  
CT  
MRA  
SRA  
PET

## 3. Externalization of patients

# Information Services in Healthcare

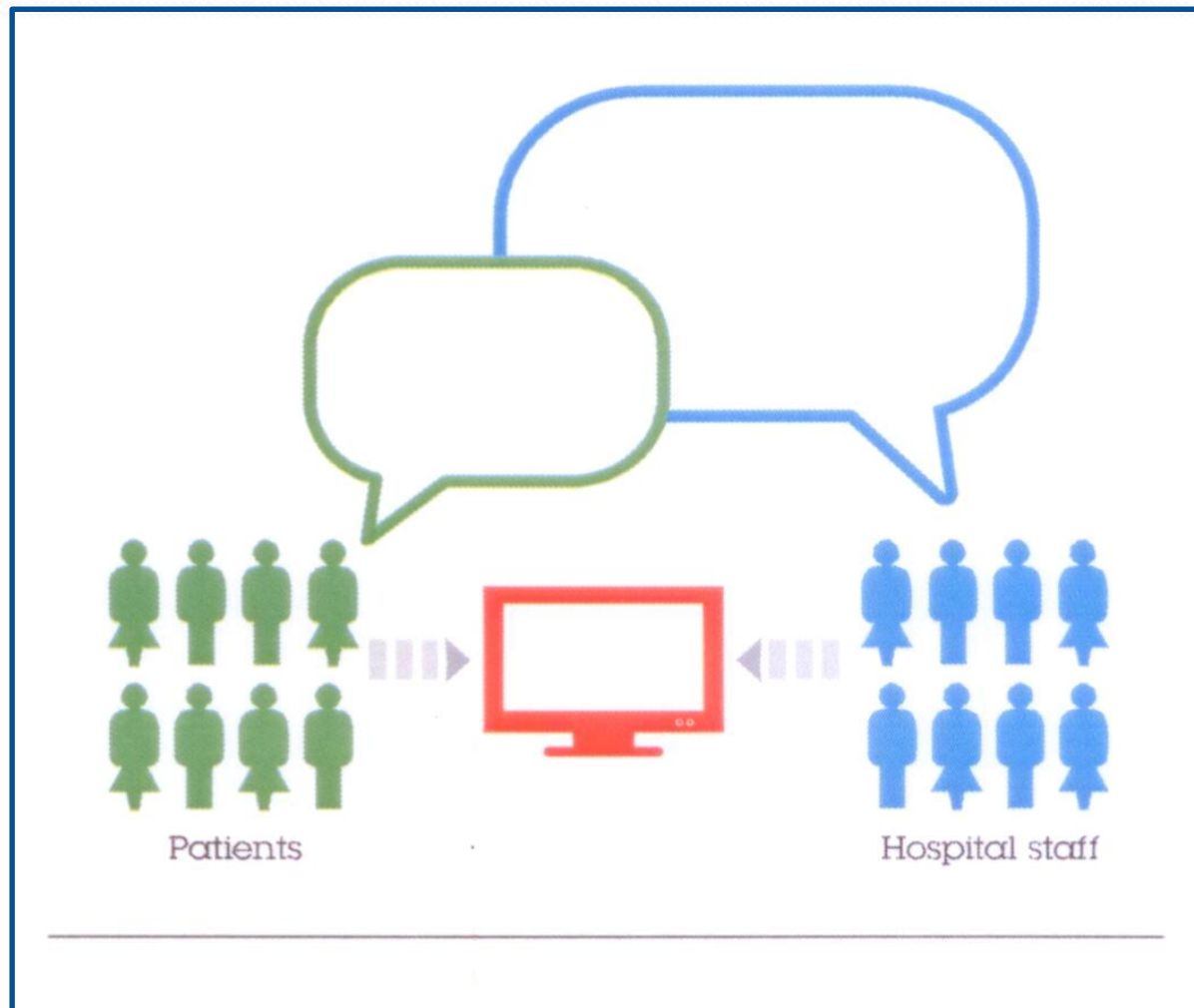
- **Real time evidence of costs/ patient/ ward/ hospital**
- **Evidence of stocks - pharmacy**
  - reagents
  - food
  - consumables
  - fix items
- **Salaries**
- **Reports**
- **Financial balances**

# Service Oriented Architecture for Information Services in Healthcare





# Smarter healthcare



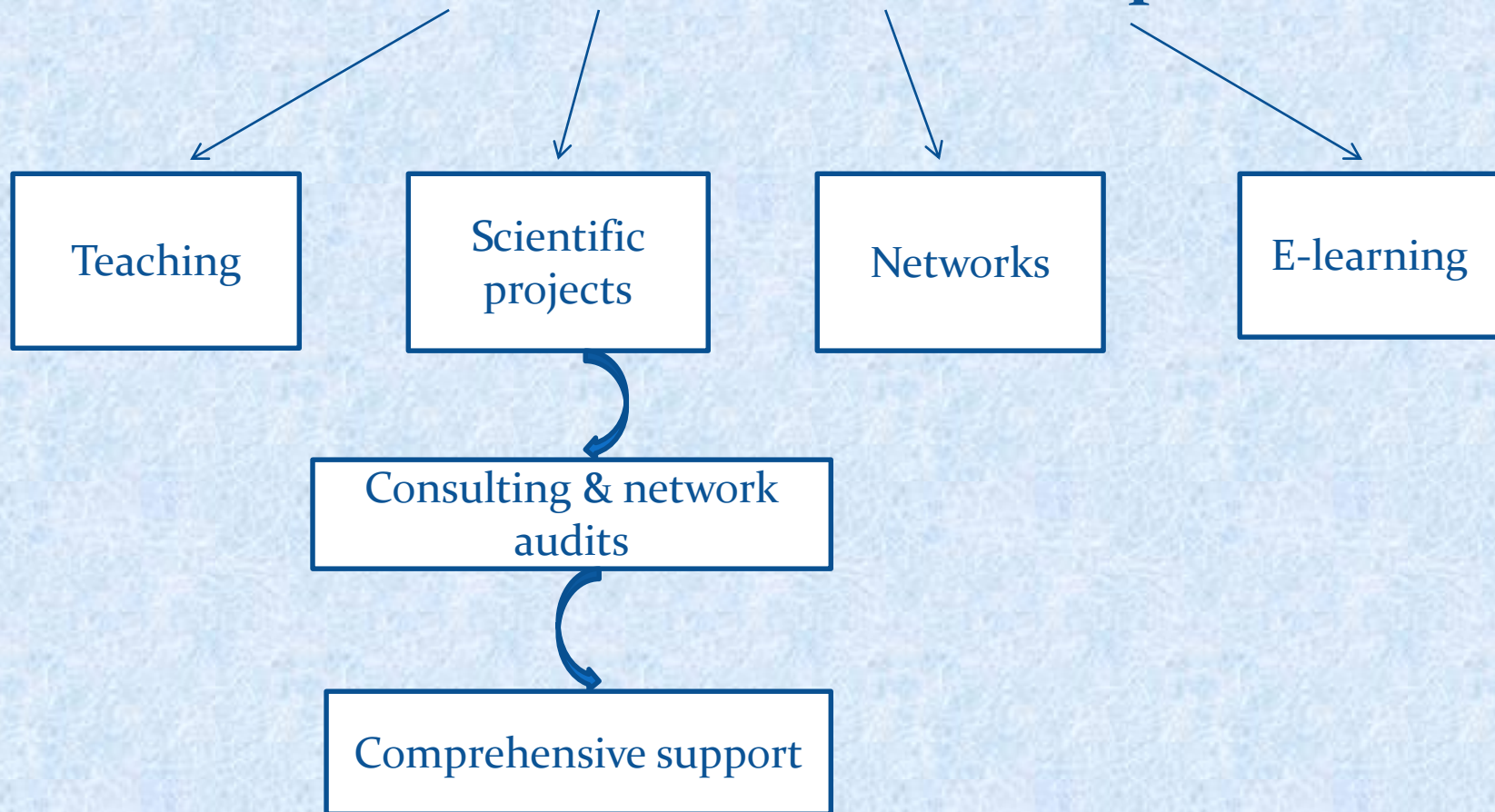


# Smarter healthcare

- Do our doctors have access to the right patient and drug information at the right time?
- Do we collaborate, not just cooperate, with other doctors, our patients and the healthcare community?
- Are our operational processes able to adapt and respond quickly to meet patients demands?
- Is our medical information stuck in silos and underutilized across the organization?
- Are we focused on the patient?

# Interconnected Education and Research on Services for Smart Care

University clinic – Research  
Research and Grants Dept.

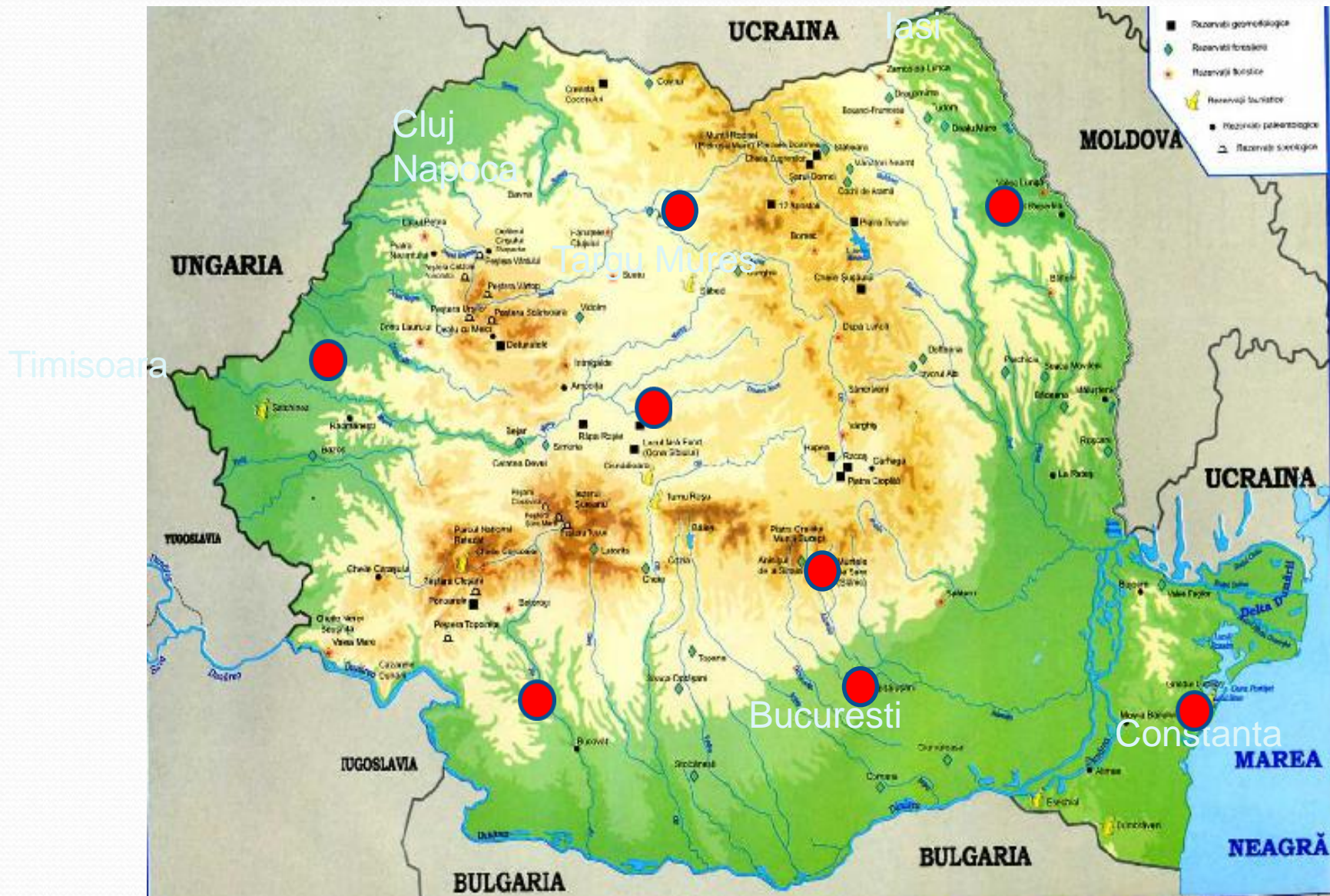


# Information management (INSEED Development)

- Independent and Standards – Based Technology
- Interoperability Services
- Professional Services
- Optimizing care and performance

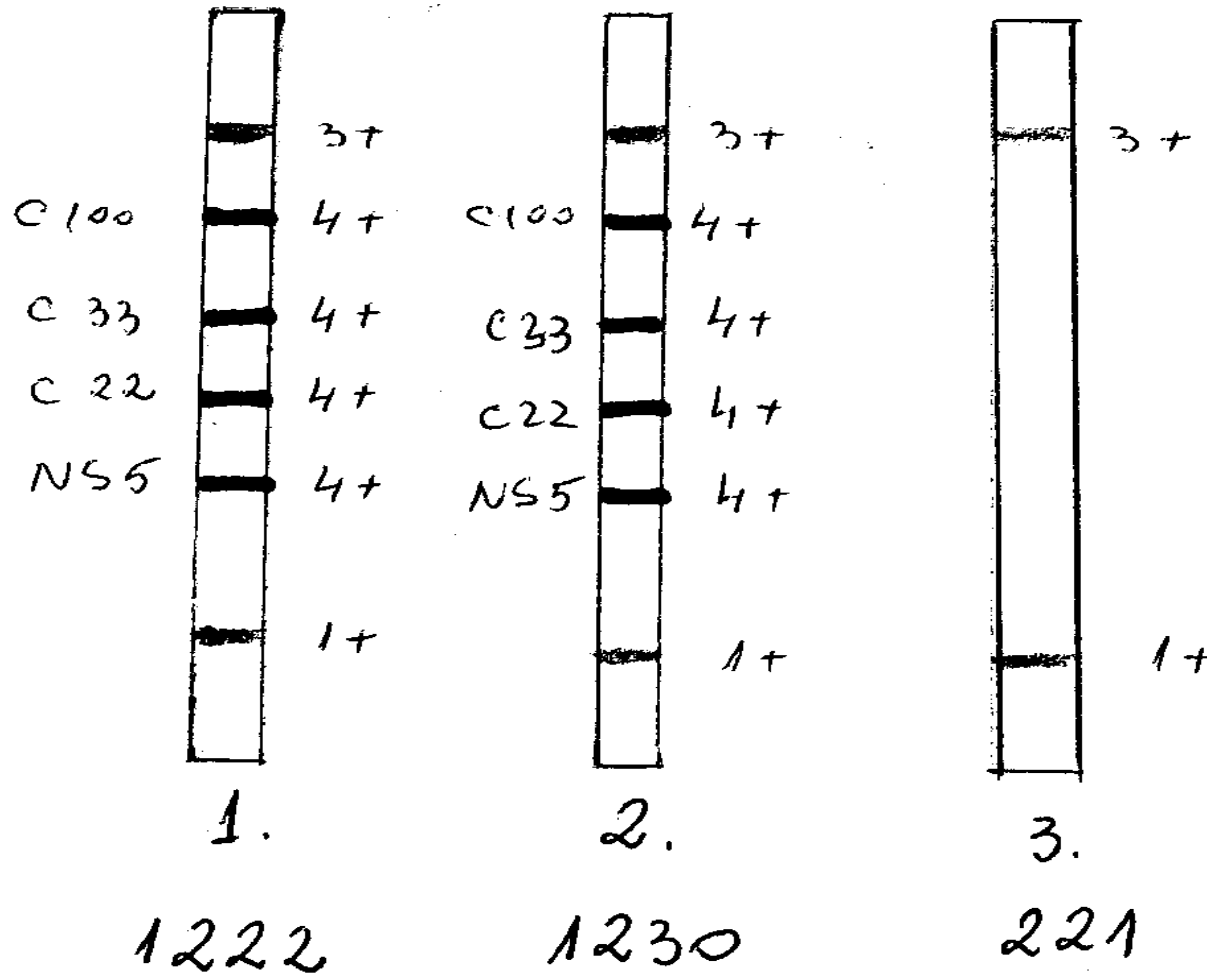


# INSEED Partner Universities in Healthcare Services



# Research in Information-based Medicine – Transfer of INSEED results in Healthcare

RIBA confirmatory test for HCV





# Research in Information-based Medicine – Transfer of INSEED results in Healthcare

- **HLA typing:** Bone Marrow Tr. Unit  
Liver Tr. Unit  
Renal Tr. Unit  
Pancreatic islets Tr. Unit

National Bone Marrow Donor Registry

Waiting list for - Bone Marrow tr.  
- Liver and Renal tr.



# Research in Information-based Medicine – Transfer of INSEED results in Healthcare

## Allele SBT- new alleles- Allele SEQR typing kit - Patients results

Assign - Patient 49

File Edit View Launch Reports Help

IMGT/DPB1 2004-04-05 .....130|...|...140.....150.....160.....170.....1849

Exon 2 24 Codon 13.1 CAGGAATGCTACGCGTTTAAATGGGACACAGCGCTTCCTGGAGAGATACATCTACAAC

49 DRB1

49 A CAGGAATGCTACGCGTTTAAATGGGACACAGCGCTTCCTGGAGAGATACATCTACAAC

49 DPB1 CAGGAATGCTACGSGTTTAAATGGGACACAGCGCTTCCTGGAGAGATACATCTACAAC

49\_DPB1\_F

49\_DPB1\_R Rev

Allele 1	Allele 2	Full	Part	MM 0	MM 1
DPB1*040101	DPB1*0402	264	0	0	NA
DPB1*2301	DPB1*5101	264	0	0	NA
DPB1*020102	DPB1*040101	264	0	0	NA
DPB1*020102	DPB1*3301	257	7	1	NA
DPB1*040101	DPB1*5101	264	0	1	NA
DPB1*040101	DPB1*5901	257	7	1	NA
DPB1*040101	DPB1*6001	257	7	1	NA
DPB1*040101	DPB1*7701	264	0	1	NA
DPB1*040101	DPB1*8001	251	13	1	NA
DPB1*040101	DPB1*8201	264	0	1	NA
DPB1*040101	DPB1*8301	264	0	1	NA
DPB1*040101	DPB1*9401	264	0	1	NA
DPB1*040102	DPB1*0402	264	0	1	NA
DPB1*0402	DPB1*2301	264	0	1	NA
DPB1*0402	DPB1*3301	257	7	1	NA
DPB1*0402	DPB1*3901	263	1	1	NA
DPB1*0402	DPB1*7201	255	9	1	NA
DPB1*0402	DPB1*9901	264	0	1	NA
DPB1*2301	DPB1*4901	255	9	1	NA
DPB1*2301	DPB1*8101	264	0	1	NA
DPB1*5101	DPB1*7101	255	9	1	NA
DPB1*5901	DPB1*7201	255	2	1	NA
DPB1*7101	DPB1*8101	255	9	1	NA
DPB1*7201	DPB1*8301	255	9	1	NA
DPB1*020102	DPB1*040102	264	0	2	NA
DPB1*020102	DPB1*2301	264	0	2	NA
DPB1*020102	DPB1*3901	263	1	2	NA
DPB1*020102	DPB1*7101	255	9	2	NA
DPB1*020102	DPB1*7201	255	9	2	NA
DPB1*020102	DPB1*9901	264	0	2	NA
DPB1*020103	DPB1*040101	264	0	2	NA
DPB1*020103	DPB1*3301	257	7	2	NA
DPB1*020104	DPB1*040101	263	1	2	NA
DPB1*020104	DPB1*3301	257	6	2	NA
DPB1*020105	DPB1*040101	264	0	2	NA
DPB1*020105	DPB1*3301	257	7	2	NA
DPB1*020106	DPB1*040101	264	0	2	NA

49

97 C 124

Master BCS

Confirm Mismatch

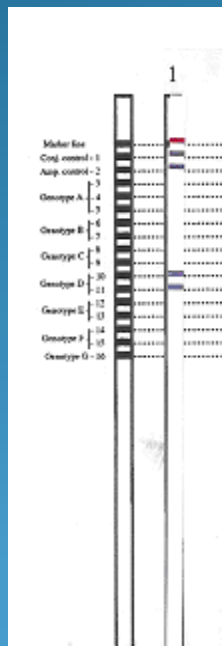
NUM

EN 14:37

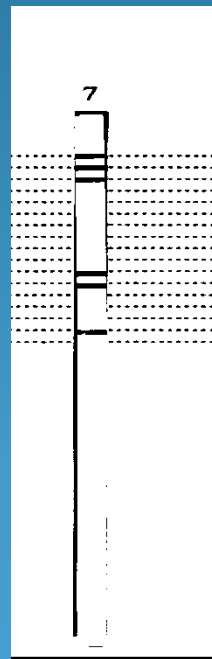
# Research in Information-based Medicine – Transfer of INSEED results in Healthcare

## HBV genotyping in Romania

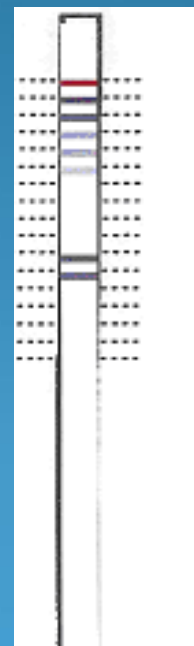
INNO - LiPA HBV, Immunogenetics



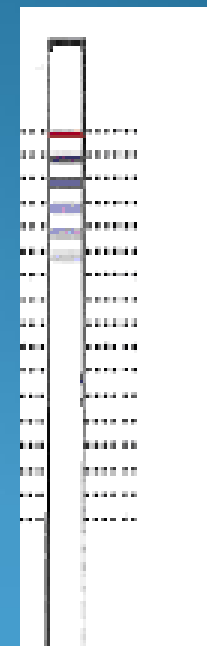
D Genotype



D+F Genotype



D+A Genotype



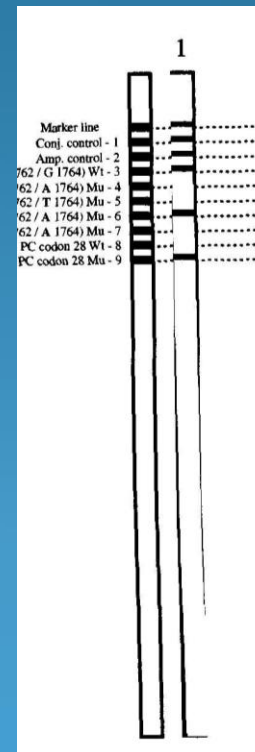
A Genotype

# Research in Information-based Medicine – Transfer of INSEED results in Healthcare

## HBV precore – core mutants - INNO – LiPA HBV precore, Immunogenetics



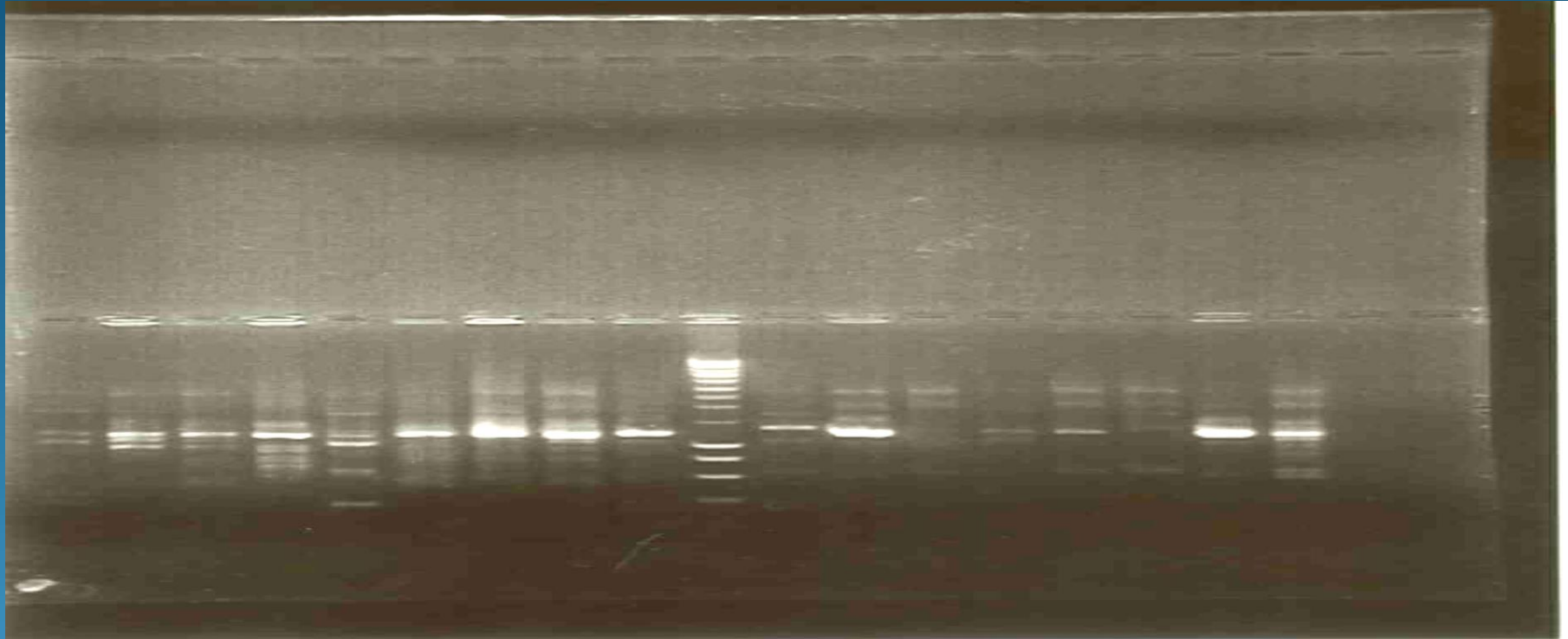
BCP A 1762/G1764  
PC codon 28- no  
mutants



BCP A 1762/G1764  
BCP T 1762/A 1764



# Research in Information-based Medicine – Transfer of INSEED results in Healthcare HBV in pathogenesis of HCC



```
Query: 1 tttgtcctcctaattccaggatcaacaacaaccagtcacgggaccatgcaaaa--tgca-g 57
          |||
Sbjct: 317 tttgtcctcctaattccaggatcaacaacaaccagt-acgggaccatgcaaaaacctgcacg 375

Query: 58 actcctactcaaggcaaactctatgtttcctcatggttgctgtacaaaacctacgatcgg 117
          |||
Sbjct: 376 actcctgctcaaggcaa-ctctatgtttcctcatggttgctgtacaaaacctacgggatgg 434

Query: 118 aaattg-acctgtattcccatcccatc-tcctggggctttcc--aaatacctatgg 168
          |||
Sbjct: 435 aaattgacacctgtattcccatcccatcgtcctggggctttcgcgcaaaaatacctatgg 489
```

# Conclusions

- UMF Carol Davila and the Immunogenetics Centre developed education and research activities in the domain of Healthcare Services with ICT support.
- Transplantation immunology is complex, uses software services
- Our Immunogenetics Centre provide expanded immunological monitoring together with virological and drug monitoring of the transplanted patients.
- Our goal is to offer **complete integrated monitoring data of our patients** and to fulfill EFI Standards. For this we need smart IT solutions and services in our University hospital.
- Clinical and laboratory scientists should work together as a team in to have a complete overview of transplanted patients.